

EXASUN

X-Roof



Technical datasheet Exasun X-Roof

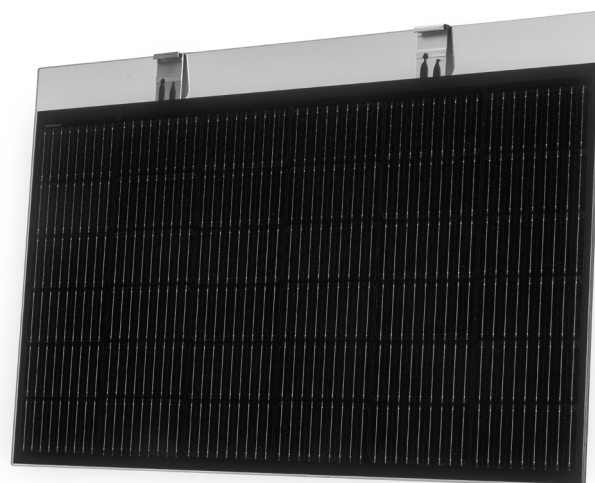
XR036H-111BK-B

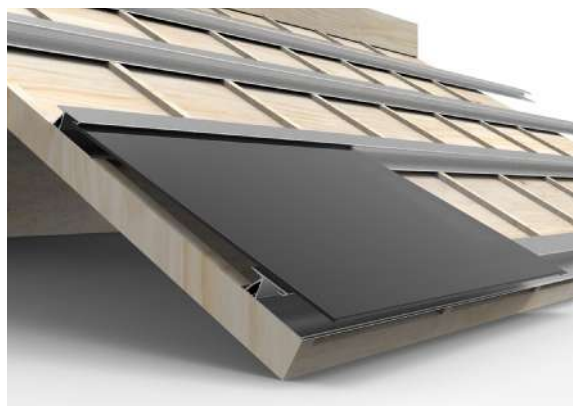
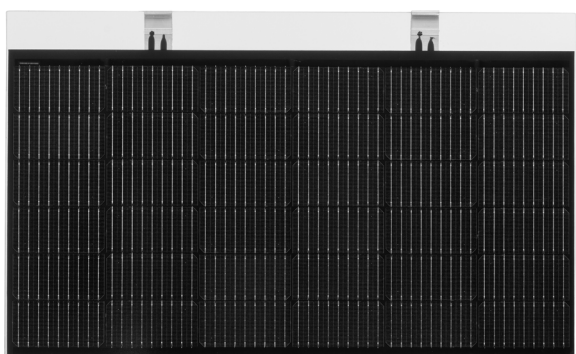
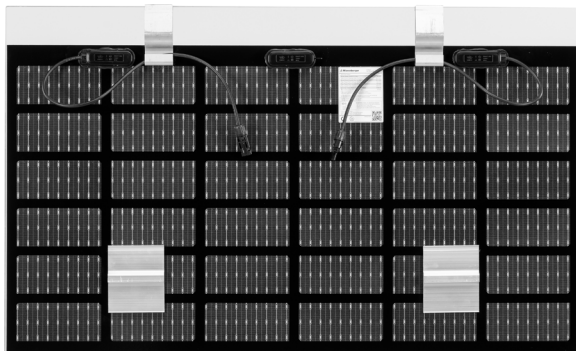
Power

203 Wp/m²

Complete system to replace the conventional roof tiles. With matching filler panels that can be cut to size. Excellent solution for new construction, renovation, and prefab roofs. For both individual homes and housing projects.

- No roof tiles needed
- Optimal roof surface utilisation
- Good ventilation
- Quick and easy installation





Exasun X-Roof

Model	XR036H-111BK-B
-------	----------------

ELECTRICAL DATA*

Module efficiency (η)	[%]	20.3
Rated Power output (P_{MAX}) ($\pm 5\%$)	[Wp]	111
Max. Power Point Voltage (V_{MPP})	[V]	21
Max. Power Point Current (I_{MPP})	[A]	5.3
Open Circuit Voltage (V_{OC}) ($\pm 1\%$)	[V]	25.2
Short Circuit Current (I_{SC}) ($\pm 2\%$)	[A]	5.6

*Values at STC: Irradiance at 1000 W/m²; Cell Temp. (25 \pm 2)°C and AM 1.5 acc. to EN 60904-3.

Electrical ratings at NMOT (nominal module operating temperature)

nominal module operating temperature [°C]	32.8
Nominal module power [W]	84

COMPONENTS AND DIMENSIONS

Cell type	[-]	M6 half cell; P-type monocrystalline Si
Module	[-]	Frameless BIPV glass/glass
Dimensions	[mm]	1033 x 530 active area (1033 x 630 Full module)
Thickness	[mm]	7.5 \pm 1
Weight	[kg]	12.2
Mounting	[-]	Rear Mounting Block for X-Roof Mounting Profile
Front glass	[-]	3.2 [mm] tempered glass
Back glass	[-]	3.2 [mm] tempered glass (black coated inside)
Diodes	[-]	3
Connectors		Stäubli MC4

OPERATING CONDITIONS

Max. Static Load Front	[Pa]	5400 (1.5 x 3600)
Max. Static Load Rear	[Pa]	2400 (1.5 x 1600)
Max. Hailstone impact	[mm]	55 (at 33.9 m/s)
P_{MAX} Temperature coefficient (γ)	[%/°C]	-0.320
V_{OC} Temperature coefficient (β)	[%/°C]	-0.251
I_{SC} Temperature coefficient (α)	[%/°C]	+0.048
Operating temperature	[°C]	-40 tot +85
Max DC Syst. Voltage (V_{sys})	[V]	1000
Max. Overcurrent protection rating	[A]	15

WARRANTY

Product Warranty	30 Years
Power Output Warranty	30 Years
Annual Degradation over 30 years	0.45%

Certification

In accordance with: IEC 61215-1:2016; IEC 61215-2:2016; IEC 61730-1:2016 and IEC 61730-2:2016. Exasun strives to provide you with the correct specifications. This datasheet is in accordance with the requirements of NEN EN 50380. Specifications are subject to change without notification.

