

DATASHEET BLACK ROOF™

X15-BR75 – 180 Wp/m²

Compleet waterdicht daksysteem.

Inclusief ophangconstructie en paspanelen.

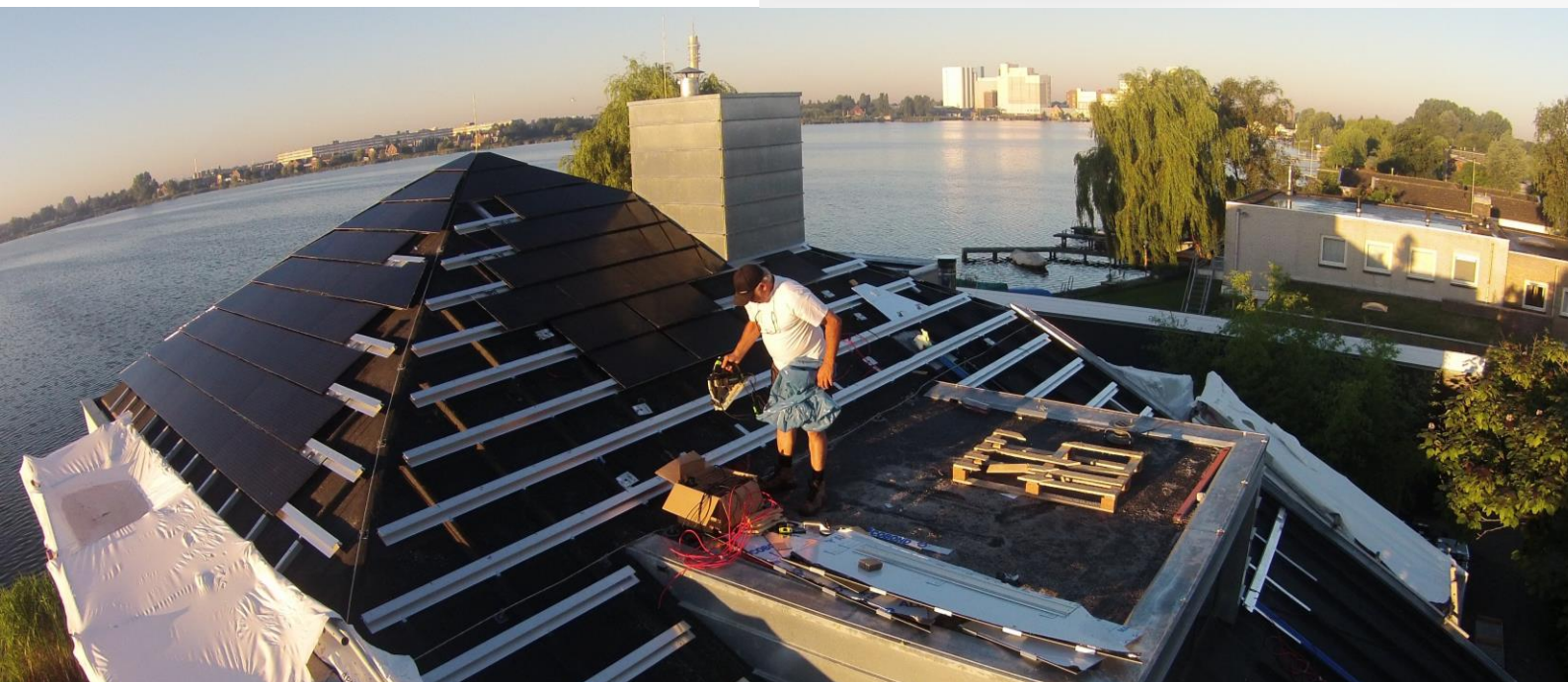
A photograph of a white house with a black roof, set against a backdrop of trees and a cloudy sky. The image is partially obscured by a semi-transparent grey overlay containing the EXASUN logo and tagline.The EXASUN logo, featuring the word "EXASUN" in a bold, black, sans-serif font. A diagonal slash with a yellow-to-orange gradient is positioned over the "X".

SUPERIOR SOLAR PANELS | PRODUCED & INVENTED IN THE NETHERLANDS

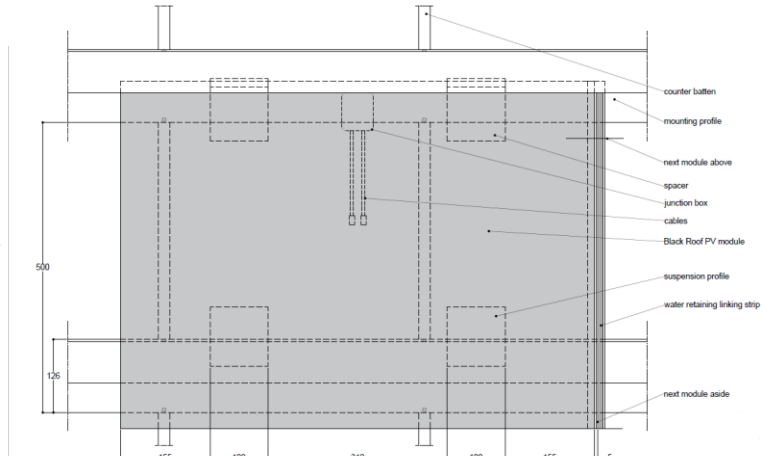
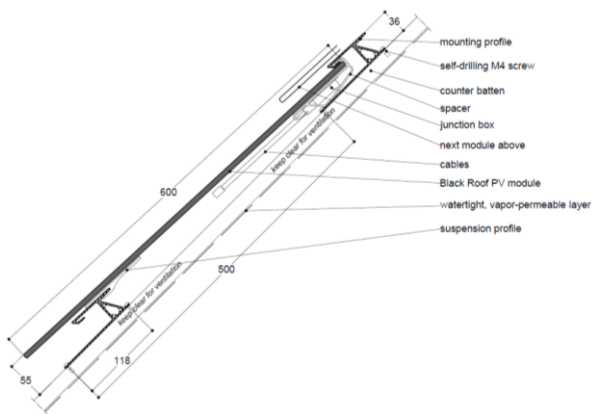
BLACK ROOF™

Compleet systeem ter vervanging van de dakpannen. Met passende verzaagbare paspanelen. Uitstekende oplossing voor nieuwbouw, renovatie en pre-fab daken.

- > Optimale dakvulling
- > Goede ventilatie
- > Snelle installatie



BLACK ROOF™



MODULE SPECIFICATIONS

ELECTRICAL PERFORMANCE (STC)

Module Efficiency	Nm [%]	18,3%
Peak Power Output	Pmax [Wp]	75
Maximum Power Voltage	Vmpp [V]	8,3
Maximum Power Current	Impp [A]	9,0
Open Circuit Voltage	Voc [V]	10,0
Short Circuit Current	Isc [A]	9,6

STC: Irradiance at 1000W/m²; Cell temp. 25 C, AM 1.5 spectrum according to EN 60904-3

ELECTRICAL PERFORMANCE (NOCT)

Maximum Power	Pmax [Wp]	55,6
Maximum Power Voltage	Vmpp [V]	7,1
Maximum Power Current	Impp [A]	7,8

NOCT: Irradiance at 800W/m²; Ambient Temp. 20. Wind speed 1.0 m/s

COMPONENTS & DIMENSIONS

Cell Type	PERC - Monocrystalline Silicon - Metal Wrap Through	
> Dimensions	mm	156,75 x 156,75
Module	Frameless BIPV Glass-Glass module	
> Dimensions	mm	820 x 500 active area (820 x 600 full module)
Weight	kg	7
Mounting	Rearside Mounting Plates	
Frontside Glass	3.2 hardened ultraclear mat glass (EN1863)	
Back Side Glass	3.2 mm hardened glass	
Diodes	1	
Connector	MC 4	

OPERATING CONDITIONS

Max. Static Load Front	snow	5400Pa
Max. Static Load Back	wind	2400Pa
Max Hailstone Impact		75 mm at 39.5 m/s
Temp Coefficient Power	Pmax	-0.375 %/K
Temp Coefficient Voltage	Voc	-0.294 %/K
Temp Coefficient Current	Isc	+0.041 %/K
Operating Temperature range	C	-40 C to 85 C
Max System Voltage	V DC	1000
Max Series Fuse Rating	A	12